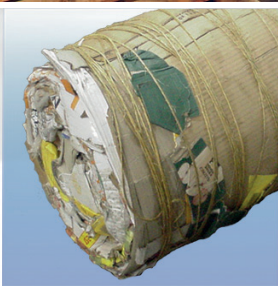
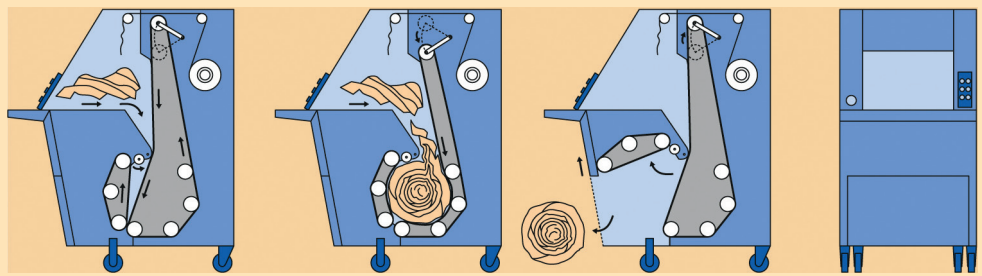


RV 641 - RV 642 Waste Rollers





Advantages at a glance:

- Compact design and flexible in use
- Robust and reliable in continuous use with high operation comfort
- Automatic wrapping technique
- Improved hygienic conditions at work - increased cleanliness and order
- Impressive cost saving operation by a low deployment of labour and by reduced costs for storage, transportation and disposal

Technical Data WELGER Waste Rollers

	RV 641	RV 642
Dimensions		
Depth	1490 mm	1490 mm
Width	900 mm	900 mm
Height	1750 mm	1750 mm
Weight	540 kg	540 kg
Bale diameter	up to 400 mm	up to 400 mm
		3 stages, pre-selectable
Bale length	600 mm	600 mm
Bale weight, depending on baling material	up to 30 kg	up to 30 kg
Bale density, depending on baling material	250 - 400 kg/m ³	250 - 400 kg/m ³
Throughput	up to 300 kg/h	up to 300 kg/h
Catchment speed	0,36 m/s	0,36 m/s
Binding material	stretch film 23 µm	stretch film 23 µm
Roll diameter	250 mm	250 mm
Width of film	580 - 600 mm	580 - 600 mm
Binding and bale ejection	semi automatic	fully automatic
Reverse run	semi automatic	semi automatic
Indication of bale diameter	LED	Display
Signals indicating maximum filling level	acoustic	acoustic + optical
Guards secured by	safety position switch	safety position switch

The electrical equipment complies with the VDE regulations. The relevant electricity supply company's regulations must be observed when connecting to the power supply. The connection to an electrical power supply must be protected with at least 16 A (delayed) on the building side. The right is reserved to make technical modifications.

Concentrated power without wasting space

Due to their compact and mobile design, the Welger Waste Rollers RV 641 and RV 642 can be integrated into operational processes almost at every place where recycling materials occur to compact film, cardboard, plastic strapping, paper stripes, foam packaging and matting material, fleece materials and many other materials for disposal. The Welger Waste Rollers bale voluminous waste material into cylindrical bales in the easiest way and at the tightest space.

Welger Waste Rollers RV 641 and RV 642 are equipped with the world-wide-approved Welger-Waste Roller design, with material compression formed by two wide, circulating conveying belts with a special gripping structure profile. Baling material cannot re-expand in the baling chamber even when machine is switched off.

Welger Recycling Engineering GmbH

Grotian-Steinweg-Strasse 12
D - 38112 Braunschweig
Tel. +49 (0) 531-28904-710
Fax +49 (0) 531-28904-700
wre@welger.com
www.welger-recycling.com

